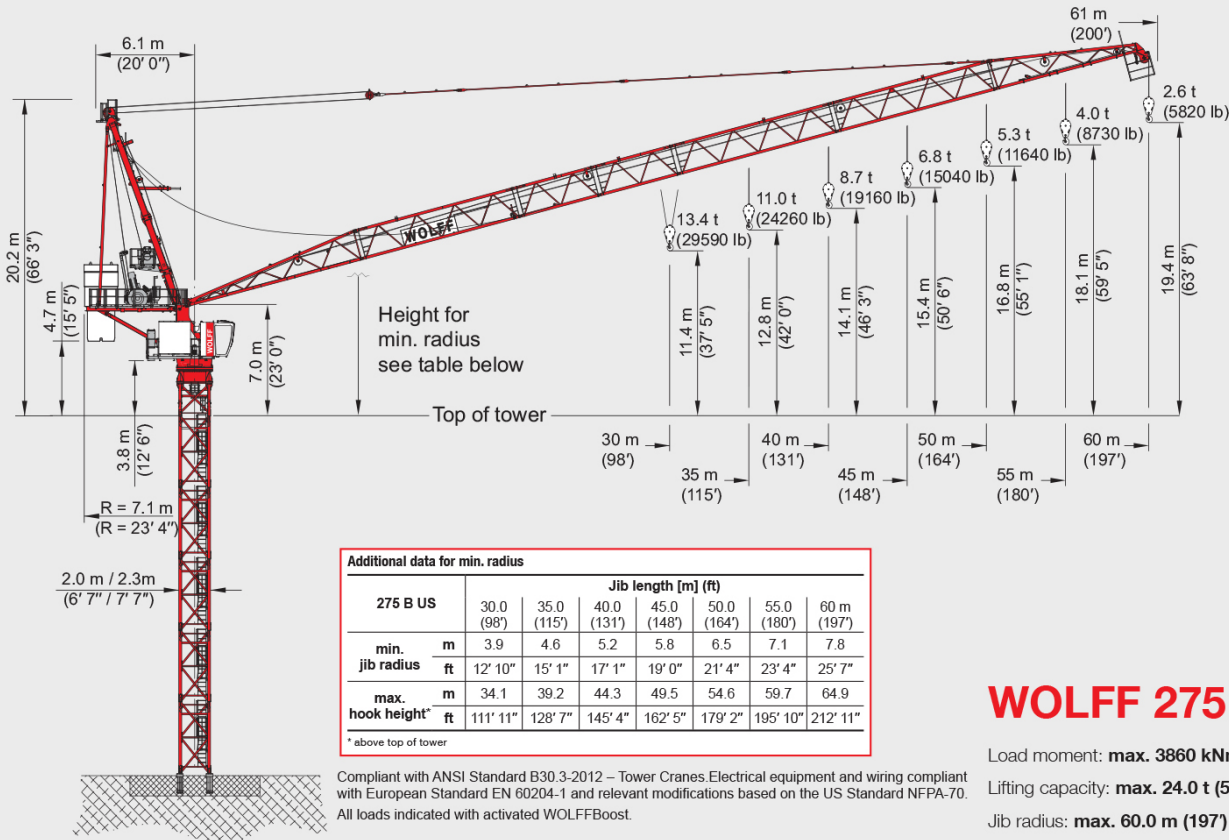




WOLFFKRAN



WOLFF 275 B US

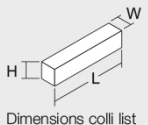
Load moment: max. 3860 kNm

Lifting capacity: max. 24.0 t (52910 lb)

Jib radius: max. 60.0 m (197')

WOLFF 275 B US · Package List

Pos.	Pcs.	Description	Component	Length [m] (ft)	Width [m] (ft)	Height [m] (ft)	Weight [kg] (lb)	Volume [m³] (ft³)
1	1	Tower top upper part (incl. luffing gear 1460 FU and braces, sectionable)		12.71 (41'8")	2.30 (7'7")	2.92 (9'7")	11455 (32524)	85.36 (3014.46)
2	1	Tower top lower part		8.03 (26'4")	2.71 (8'11")	2.56 (8'5")	14755 (32529)	55.71 (2080.74)
				8.22 (27'0")	2.80 (9'2")	2.56 (8'5")	16075 (35439)	58.92 (2124.74)
				4.17 (13'8")	2.25 (7'5")	2.48 (8'2")	3350 (7385)	23.34 (832.25)
				2.71 (8'11")	2.30 (7'7")	2.41 (7'11")	9445 (20822)	15.08 (532.55)
				2.43 (8'0")	2.24 (7'4")	2.11 (6'11")	1960 (4321)	11.49 (405.77)
3	1	Driver's cabin with suspension (incl. switch cabinet)		2.80 (9'2")	2.32 (7'7")	2.30 (7'7")	3280 (7231)	14.94 (511.71)
				2.80 (9'2")	2.32 (7'7")	2.30 (7'7")	3280 (7231)	14.94 (511.71)
4	1	Counterjib (incl. platforms)		5.56 (18'3")	2.08 (6'10")	2.56 (8'5")	2865 (6316)	29.61 (1045.67)
5	1	Hoisting winch Hw 2475 FU (incl. rope swing-reduction device, 2nd brake and 820 m (2690) hoisting rope)		6.64 (21'9")	2.30 (7'7")	0.84 (2'9")	3935 (8675)	12.83 (453.09)
6	1	Jib element 1		2.62 (8'7")	2.06 (6'9")	2.47 (8'1")	8235 (18155)	13.33 (470.75)
7	1	Jib element 2 (with WOLFF sign)		11.76 (38'7")	2.19 (7'2")	1.97 (6'6")	2460 (5423)	50.74 (1791.87)
8	1	Jib element 3		10.56 (34'8")	1.73 (5'8")	1.96 (6'5")	1780 (3924)	35.81 (1264.62)
9	1	Jib element 4		5.39 (17'8")	1.73 (5'8")	1.96 (6'5")	960 (2116)	18.28 (645.55)
10	1	Jib element 5		5.39 (17'8")	1.73 (5'8")	1.96 (6'5")	880 (1940)	18.28 (645.55)
11	1	Jib element 6		10.56 (34'8")	1.73 (5'8")	1.96 (6'5")	1380 (3042)	35.81 (1264.62)
12	1	Jib element 7 (incl. assembly platforms)		10.56 (34'8")	1.73 (5'8")	1.96 (6'5")	1260 (2778)	35.81 (1264.62)
13	1	Hook block		10.13 (33'3")	1.73 (5'8")	1.98 (6'6")	1990 (4387)	34.70 (1225.42)
14	1	Braces (for 60 m jib)		0.68 (2'3")	0.26 (0'10")	1.66 (5'5")	535 (1179)	0.29 (10.24)
15	1	Concrete weight 2.5 t		10.48 (34'5")	0.71 (2'4")	0.18 (0'7")	1245 (2745)	1.34 (47.32)
16	1	Concrete weight 8.0 t		2.15 (7'1")	1.70 (5'7")	0.30 (1'0")	2500 (5512)	1.10 (38.85)
17	3	Concrete weight 8.0 t		2.15 (7'1")	1.70 (5'7")	0.30 (1'0")	8000 (17637)	3.44 (121.48)
				3.45 (11'4")	2.10 (6'11")	0.54 (1'9")	8000 (17637)	3.91 (138.08)



Dimensions colli list

WOLFFKRAN GmbH
 Austraße 72
 D-74076 Heilbronn
 Tel. +49 7131 9815-0
 Fax +49 7131 9815-355
 info@wolffkran.de
 www.wolffkran.de

6100094 - 12/2016

All rights reserved regarding technical and content changes.



WOLFF 275 B US

Main Components

30 m (98') basic jib. Extension up to 60 m (197') in 5 m (16') steps. Tower top with luffing gear. Slewing frame with slewing gear, electrical central lubrication and slipping system, operator's cabin station with control cabinet. Counterjib with hoisting gear and counterweights.

Drive Technique

All drives frequency controlled squirrel cage motors, fully thermal protected. Hoisting winch Hw 2475 FU, hoisting gear with performance optimization and performance reduction option. Slewing gear with electrically operated weathervaning device. Automatic windforce compensation controls. Luffing winch Ew 1460 FU with switchable electronically controlled horizontal load path.

Electrical Equipment

Multivoltage equipment for supplies from 480 V Y / 277 V 60 Hz. Voltage monitoring, electronic safety crane controls with bus technology. Incremental absolute encoders for all operating movements. Electronic load measuring. Multilingual graphic display with touchscreen. Wind indicator and signal lights.

Safety Equipment

Electronic overload protection with WOLFFBoost. Increased load moment limitation due to automatic hoist speed reduction. Menu guided setting of overload protection system and of all limiters from operator's cabin. Working space limiter. Anti-collision interface. WOLFFLink data transfer system, luffing gear with slack rope monitoring.

Tower Elements, Climbing Devices

Tower configuration of WOLFF system tower elements. WOLFF slug bolt connection. Detachable hydraulic WOLFF system climbing device KWH 20.6.1 or KWH 23 or inner climbing device KSH 20 SH or KSH (E) 23.

Cross Frame KR, Mobile Cross Frame KRF

Cross Frames with 4.6 m (15') to 10.0 m (33'). Cross frames KR can be converted to KRF. Mobile cross frame KRF with 6.0 m (20') to 10.0 m (33').

Power Requirements and Hook Paths (Slewing part)

134 kVA (Hw 2475 FU).
700 m (2296') with one-fall operation
350 m (1148') with two-fall operation

Operating Speeds - WOLFF 275 B US - (Hw 2475 FU)

Motor	[kW]	75	75	60	1 x 7.5	8 x 5.5
	(hp)	(100)	(100)	(80)	(1 x 10)	(8 x 7.4)
Speed		0 - 1.1 t (0 - 2425 lb) 0 ... 222 m/min (0 ... 728 ft/min)	0 - 2.8 t (0 - 6173 lb) 0 ... 111 m/min (0 ... 364 ft/min)	1.3 ... 1.8 min	0.8 min ⁻¹	30.0 m/min (98 ft/min)
		stepless 0 - 12.0 t (0 - 26460 lb) 0 ... 31.5 m/min (0 ... 103 ft/min)	stepless 0 - 24.0 t (0 - 52910 lb) 0 ... 16 m/min (0 ... 52 ft/min)			
Hook path	[m]	700	350			
	(ft)	(2296')	(1148')			

WOLFF 275 B US - Load Data BOOST

Operating radius [m] (ft)		20 (65'7")	25 (82'0")	30 (98'5")	35 (114'10")	40 (131'3")	45 (147'8")	50 (164'1")	55 (180'5")	60 (196'10")		
Jib length [m] (ft)	60 (197')	7.8 - 26.7 (25'7" - 87'9")	12.0 (26400)	12.0 (26400)	10.1 (22330)	8.0 (17620)	6.4 (14080)	5.1 (11330)	4.1 (9120)	3.3 (7330)	2.6 (5820)	
	55 (180')	7.1 - 27.7 (23'4" - 90'11")	12.0 (26400)	12.0 (26400)	10.8 (23730)	8.6 (19020)	7.0 (15480)	5.8 (12730)	4.8 (10530)	4.0 (8730)		
	50 (164')	6.5 - 28.6 (21'4" - 93'11")	12.0 (26400)	12.0 (26400)	11.3 (24870)	9.1 (20150)	7.5 (16600)	6.3 (13850)	5.3 (11640)			
	45 (148')	5.8 - 29.7 (18'9" - 97'4")	12.0 (26400)	12.0 (26400)	11.8 (26000)	9.7 (21350)	8.1 (17800)	6.8 (15040)				
	40 (131')	5.2 - 30.9 (17'1" - 101'5")	12.0 (26400)	12.0 (26400)	12.0 (26400)	10.3 (22730)	8.7 (19160)					
	35 (115')	4.6 - 32.5 (15'1" - 106'7")	12.0 (26400)	12.0 (26400)	12.0 (26400)	11.9 (24260)						
	30 (98')	3.9 - 30.0 (12'10" - 98'5")	12.0 (26400)	12.0 (26400)	12.0 (26400)							
	60 (197')	7.8 - 23.4 (25'7" - 76'9")	14.0 t (30880 lb)	14.0 (30880)	12.8 (28160)	9.8 (21560)	7.7 (16850)	6.1 (13330)	4.8 (10580)	3.8 (8380)	3.0 (6590)	2.3 (5090)
	55 (180')	7.1 - 19.9 (23'4" - 65'2")	18.0 t (39600 lb)	17.0 (37370)	13.4 (29510)	10.4 (22940)	8.3 (18280)	6.7 (14720)	5.4 (11900)	4.4 (9700)	3.6 (8010)	
	50 (164')	6.5 - 17.2 (21'4" - 56'7")	22.0 t (48500 lb)	18.4 (40590)	13.8 (30700)	10.0 (24100)	8.0 (17600)	7.2 (15800)	6.0 (13110)	5.0 (10910)		
45 (148')	5.8 - 16.4 (18'9" - 53'10")	24.0 t (52910 lb)	19.1 (42020)	14.5 (32040)	11.5 (25360)	9.4 (20640)	7.7 (17080)	6.5 (14310)				
40 (131')	5.2 - 16.8 (17'1" - 55'0")		19.7 (43330)	15.1 (33370)	12.1 (26730)	10.0 (21900)	8.4 (18430)					
35 (115')	4.6 - 17.2 (15'1" - 56'7")		20.4 (44920)	15.8 (34940)	12.8 (28280)	10.7 (23520)						
30 (98')	3.9 - 17.6 (12'10" - 57'9")		20.9 (46180)	16.4 (36210)	13.4 (29560)							

WOLFF-Boost

With the WOLFFBoost function, the load is allowed to exceed the load torque range specified for the lifting capacities by up to 10%. This is, however, subject to the restriction that hoisting gear and luffing gear must only be moved alternately.